

# *Stylish - Innovative - Decorative External Flooring Systems*



<sup>TM</sup>  
***Hi-Crete***  
***Systems***

---

*Innovative & Decorative Concrete Technology*

## About Us



**Renew-Crete®**  
*Systems*

Hicrete Decorative Systems Pvt.Ltd. expert in the field of installation and refurbishment of Residential, Industrial & commercial floorings, protective coatings, floor rehab in India. We have developed ourselves as one of the renowned establishment committed to customer satisfaction. Understanding the needs, fulfilling and exceeding them is always been our motto.



**SGS** SOLOMON  
COLORS, INC.



### Our major fields of interest are,

Designer Decorative Coloured Concrete Flooring Systems Installations and refurbishment of Industrial and Commercial flooring.



# *Hicrete Decorative External Concrete Flooring Systems*



*Hicrete Stamped Concrete & Hicrete Stamped Overlay Flooring*



*Hicrete Broom Finish Flooring*



*Hicrete Spray Texture Flooring*



*Hicrete Roll Coat Flooring*



*Hicrete Designer Stencil Flooring System*

*HICRETE STAMPED CONCRETE FLOORING*





*Stamped Concrete, Commonly Referred to As Patterned Concrete or Imprinted Concrete. Stamped Concrete Is Designed to Resemble Brick, Slate, Flagstone, Stone, Tile And Even Wood. It's An Economical And Strong Alternative to Pavers And Natural Stone.*

### **Where To Use:**

- Pathways or Footpaths
- Driveway
- Parking Areas
- Patios
- Garden Walkways
- Hard Scape Area In Landscapes

*HICRETE STAMPED OVERLAY FLOORING*





*Hicrete Stamped Overlay Offers All The Aesthetic Benefits Of Conventional Stamped Concrete But It Is Applied Over Existing Concrete. Stamped Concrete Overlays Allow You To Duplicate The Beauty And Texture Of Natural Stone, Brick, Slate, Wood, And Other Materials Without Having To Replace Your Concrete. Stamped Overlays Can Be Used On New Or Existing Concrete And On Interior Or Exterior Surfaces. They Are Especially Popular For Refreshing The Appearance Of Existing Driveways, Patios, Walkways Pool Decks, And Floors.*



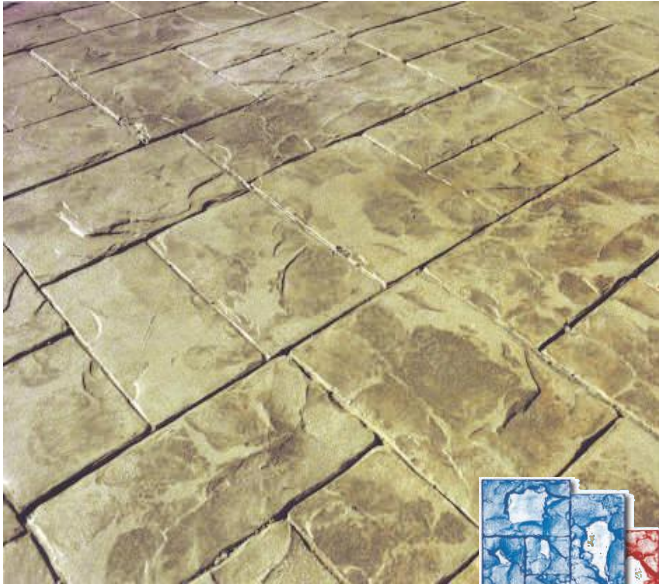
### **Where To Use:**

- Pathways or Footpaths
- Driveway
- Parking Areas
- Patios
- Garden Walkways
- Hard Scape Area In Landscapes

# STAMP PATTERN'S SELECTION

## Ashler Patterns

Ashler Slate



Royal Ashler Slate



Grand Ashler Slate



La Habra Ashlar Slate

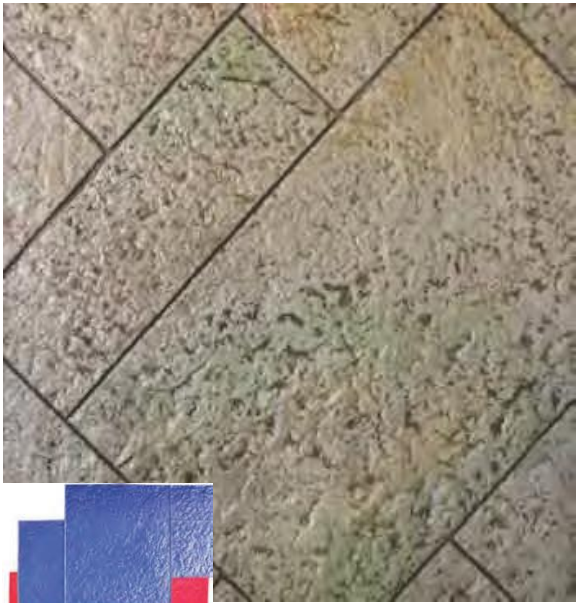




Rotating Ashlar Italian Slate



Connors Quarry Stone



Brick Patterns

Old Brick Running Bond



New Herringbone Brick 3.5"

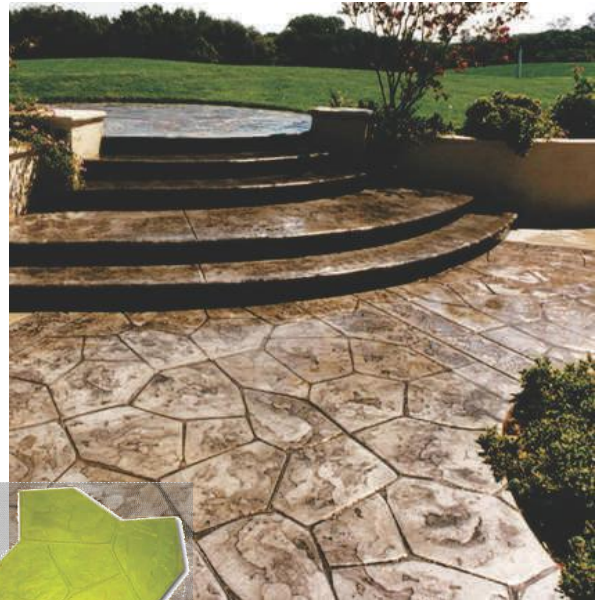


# Stone Patterns

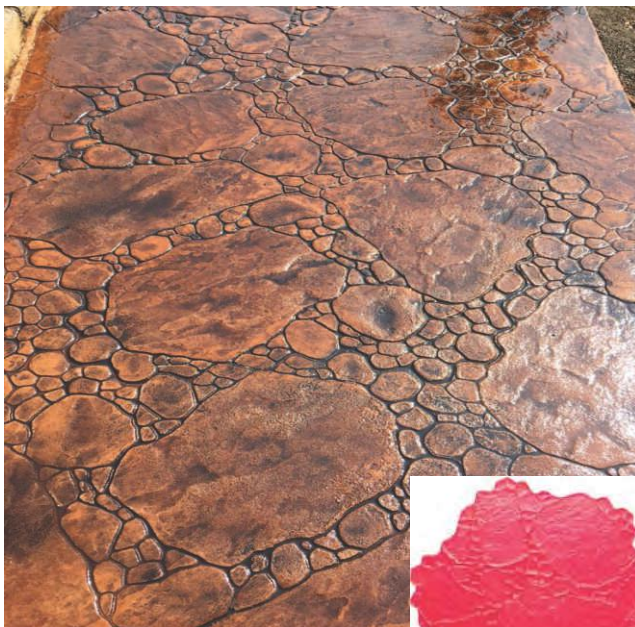
Random Stone



Flagstone



Garden Stone



Grand Canyon Stone

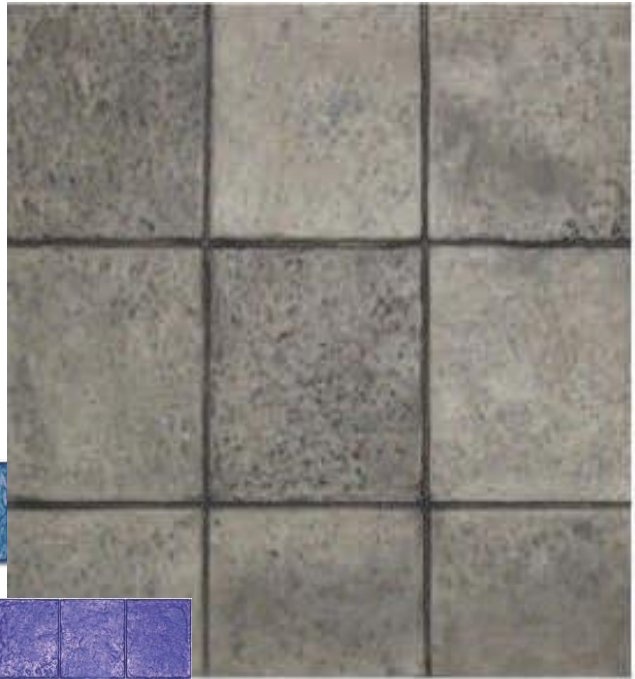


# Tile Patterns

12" X 12" Running Bond Slate



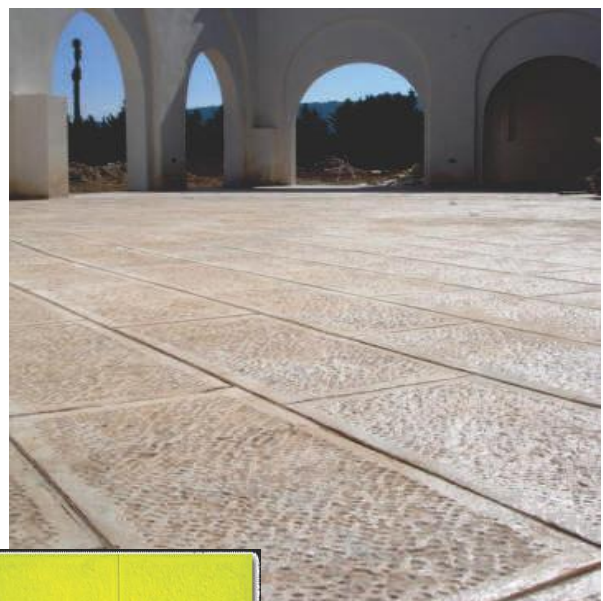
12"x12" Flag Stone Tile



12" Grouted Mexican Tile

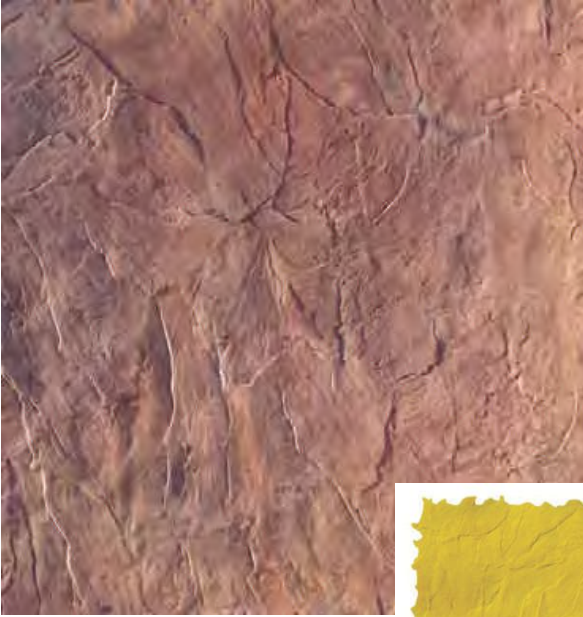


Jerusalem Stone



# Seamless Texture Patterns

Seamless Italian Slate



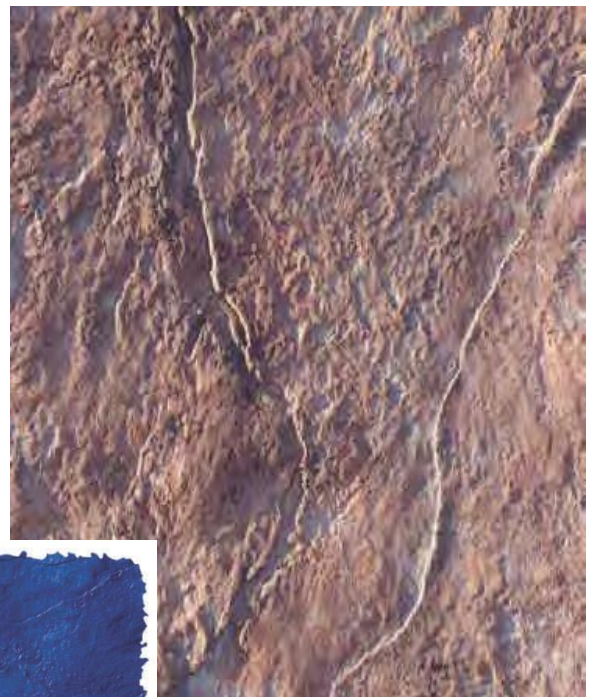
Seamless Belgium Slate



Seamless Limestone



Seamless Old Granite Stone



Seamless Coquina Stone With Shells



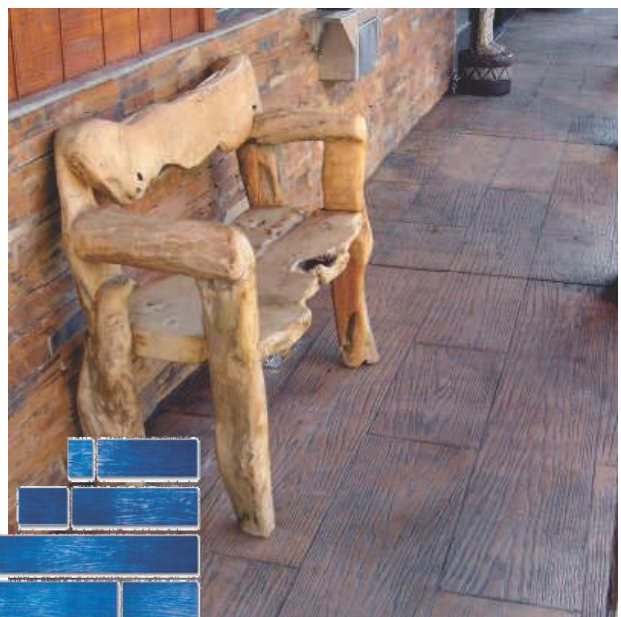
Seamless Quarry Stone



3.5" Hard Wood Floor



Pacific Boardwalk

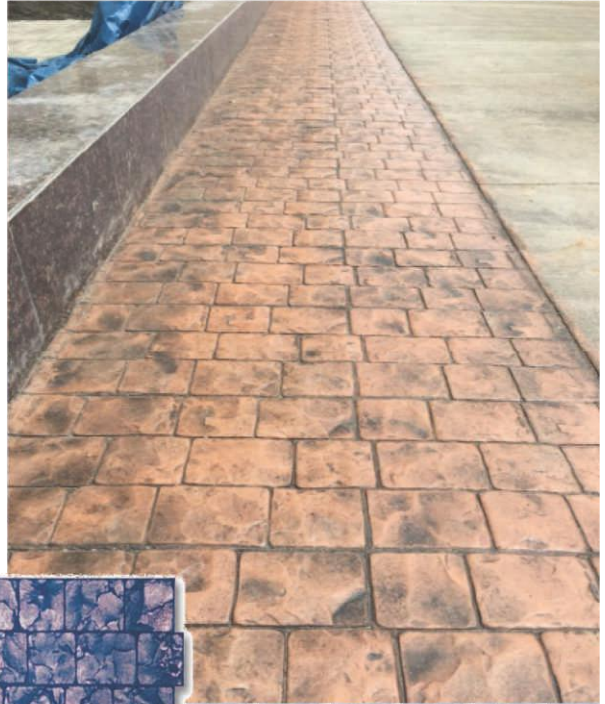


# Cobble Patterns

European Fan



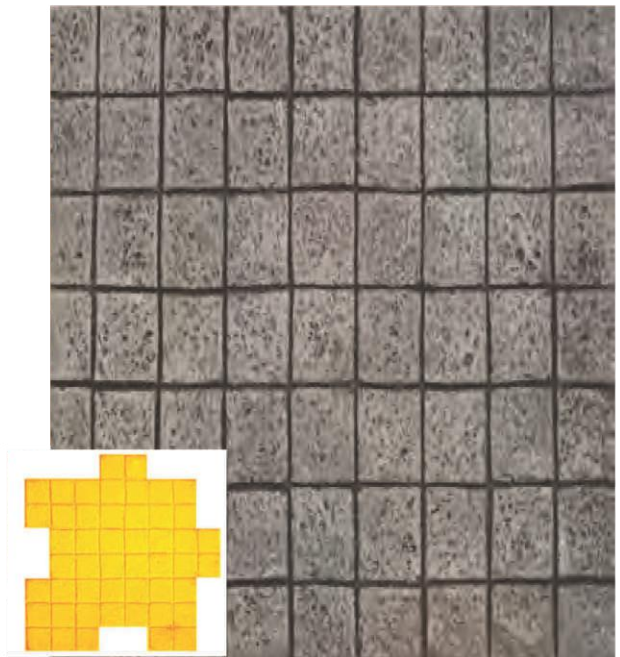
London Cobble Stone



Serpentine Slate



4" X 4" Flamed Granite Tile



# Radial Patterns

Keystone Lock Center OctaGone



Radial Cobble Stone 9 Feet Dia. Circle



Compass Medallion - 48"

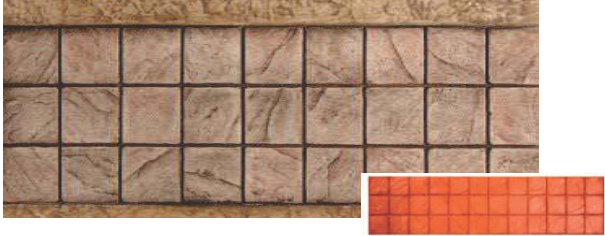


Boardwalk Picture Frame Medallion - 48"



# Border Patterns

4" x 4" italian slate band tool



New brick soilder



Stacked soilder double course



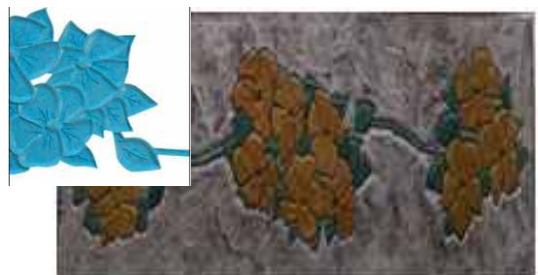
Bellagio band tool



Garden rose border



Hawaiian Flower





Grapevine Border



Grapevine Corner



Daisy Garland Border



Daisy Garland Corner



# New Designer Patterns

Basket Weave New Stone



Circulos Del Sol



30" x 30" Bushed Stone





Innovative & Decorative Concrete Technology

**Innovative Products..**

**For Innovative Industry...**

**Hicrete Standard Colour Chart**

**Stamped Concrete, Spray Texture, Stamped Overlay, Broom Finish and Roll Coat Treatment**



Ash



Beige



Ivory Sand



Philly Blue



Shell White



Adobe Buff



Light Rose



Green



Sable



Sandstone



Flagstone Buff



Gray Slate



Gray Stone



Miami Buff



Canyon Tan



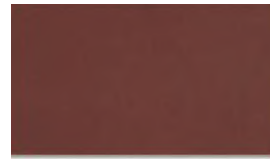
Red Taupe



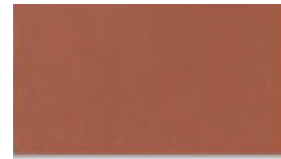
Silver Gray



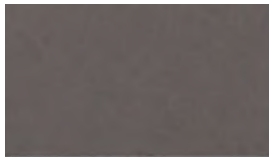
Phoenix Tan



Tile Red



Saultillo Tile



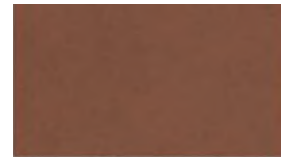
French Gray



Autumn Brown



Brick Red



Terra Cotta



Charcoal



Walnut



Rustic Brown



Terra Cotta Light

*Note: Colour selection in this brochure are approximations and represent as closely as possible, in printed version. The appearance of Hicrete product when cured and sealed using Hicrete Gloss Sealer. Variation can be expected due to finishing techniques, lighting and jobsite conditions.*

*HICRETE SPRAY TEXTURE FLOORING*





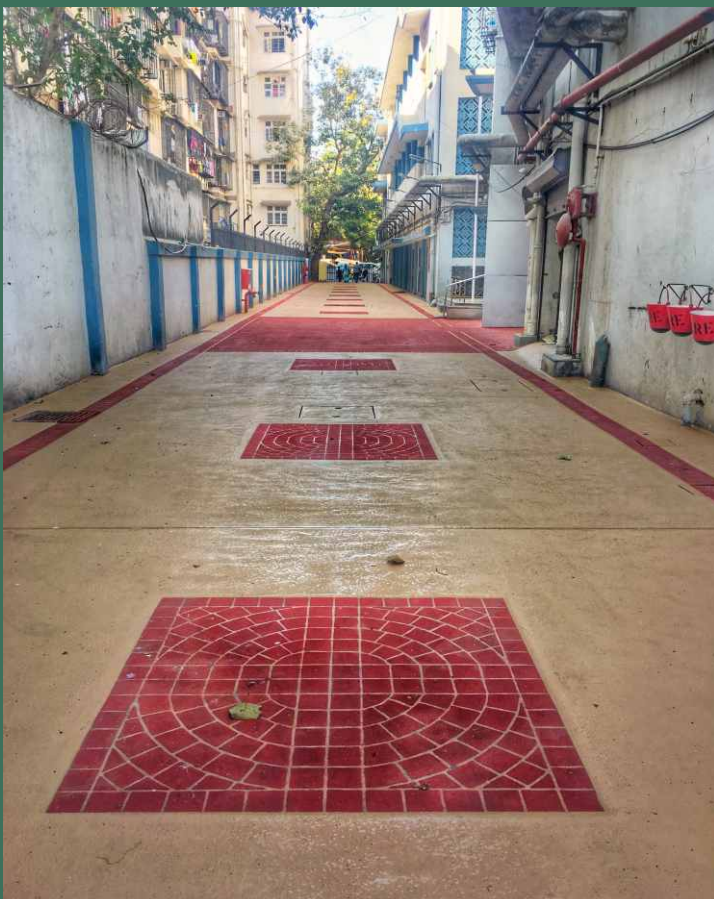
*Hicrete Spray Textured System Also Known As Trowel Knockdown, Is A Spray Applied Texture Coat Of Pigmented Polymer Mortar Designed To Decorative Or Restore New And Old Concrete Surfaces, Stained Concrete And Provide Good Looking A Decorative, Slip-resistant Finish Over Existing Concrete Surfaces. (Can be Applied by Using Special "Magic Trowel" To Get Smooth Finish)*

**Types Of Finishes In Spray Textured Flooring:**

- Knowckdown Texture
- Orange Peel Texture
- Stenciled Texture
- Squeeze Applied Smooth Finish

**Where To Use:**

- Pathways Or Footpaths
- Cycle Tracks
- Driveway
- Parking Areas
- Patios
- Garden Walkways
- Hard Cape Area In Landscape



*HICRETE BROOM FINISH FLOORING*



*With Hicrete Broom Finish System You Can Now Repair And Resurface Concrete Without Having To Remove And Replace Existing Concrete Surfaces. The Broom Finish System Offers Excellent Bonding Strength And Durability Designed To Stand The Test Of Time. It Can Be Applied In A Straight Or Swirl Pattern Finish With A Fine, Medium Or Coarse Texture And Is Most Commonly Used On Patios, Driveways, Walkways, Parking Garages, Highways And Bridges. When Used In Conjunction With The Stamped Overlay System, Ordinary Concrete Is Transformed Into Art.*



- Restores Existing Concrete,
- Long Lasting Durability,
- Excellent Bonding Strength,
- Can Be Pigmented And/or Color Sealed,
- Can Easily Be Embellished With 1/8"
- Decorative Stamping Border.



*HICRETE ROLL COAT FLOORING*





*Hicrete Roll Coat System Provides A Simple And Effective Way To Restore And Recolor Faded Or Discolored Concrete. The Cementitious Coating Is Roller Applied Or Sprayed Down, Much Like Paint, And Is Ideal For Use Over Textured, Stamped And Broom Finished Concrete. When Used In Conjunction With Integral Color, Antiquing Powder, Stain And Dye, Roll Coat Cementitious Coating System Can Achieve A Variety Of Both Natural And Modern Looks.*

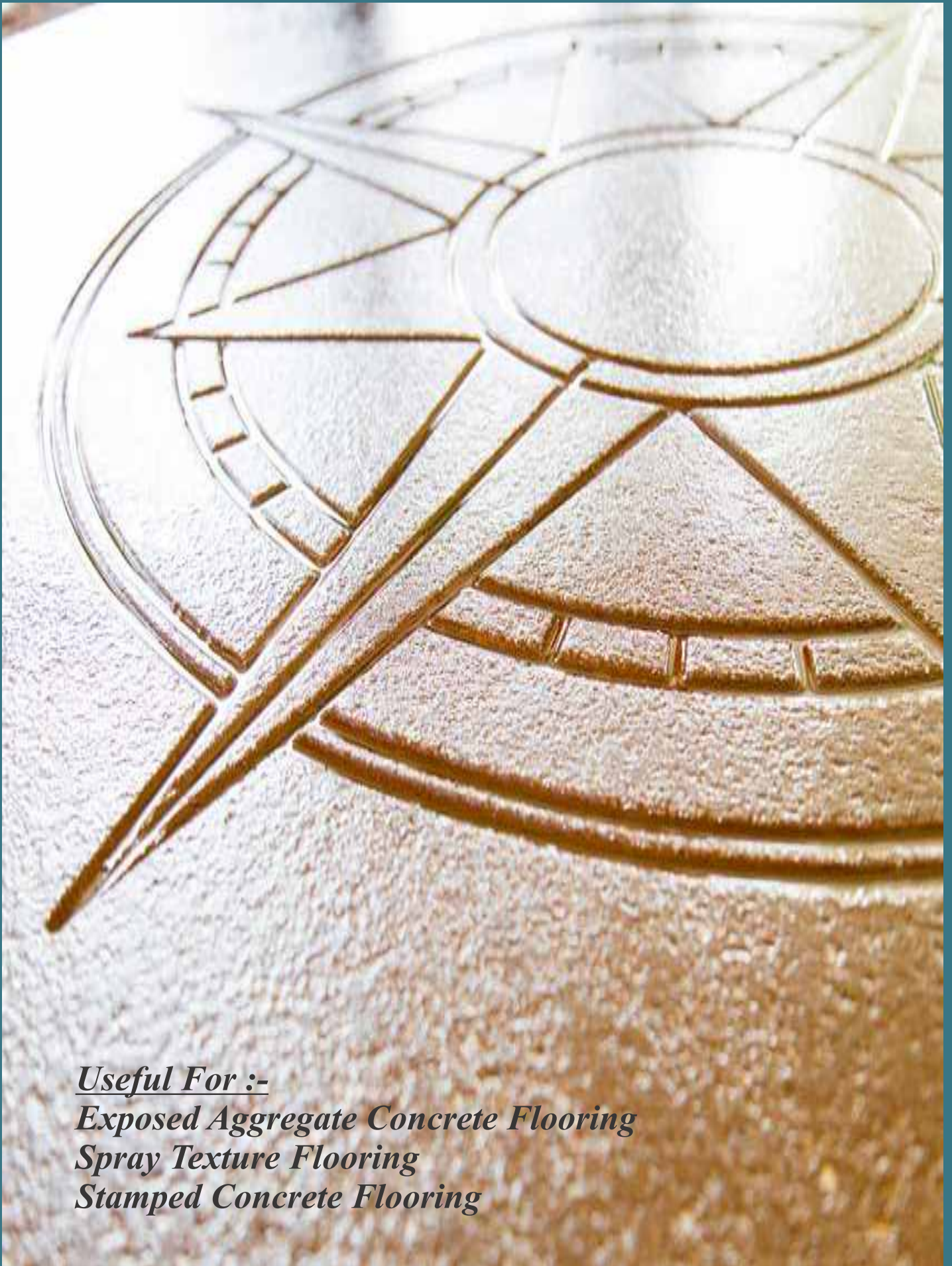
*The Roll Coat System Is Most Frequently Used Over The Stamped Concrete System, But It Can Also Be Used With Other Systems Including The Stamped Overlay And Broom Finish Systems. This Revolutionary Product Covers Most Previously Sealed (Old Age) Or Unsealed Surfaces In One Coat Without The Need For A Primer, And Dries Rapidly To Form A Smooth, Even Finish.*



- *Rolled On Or Sprayed Down Like Paint To Easily Recolor And Restore Smooth, Stamped And Broom Finished Concrete.*
- *Can Achieve A Variety Of Looks And Colors Using Integral Color, Antiquing Powder, Acid Stain Or Dyes.*
- *Dries Rapidly To Facilitate Quick Project Timelines.*



## *HICRETE DESIGNER STENCIL FLOORING SYSTEMS*



*Useful For :-*

*Exposed Aggregate Concrete Flooring*

*Spray Texture Flooring*

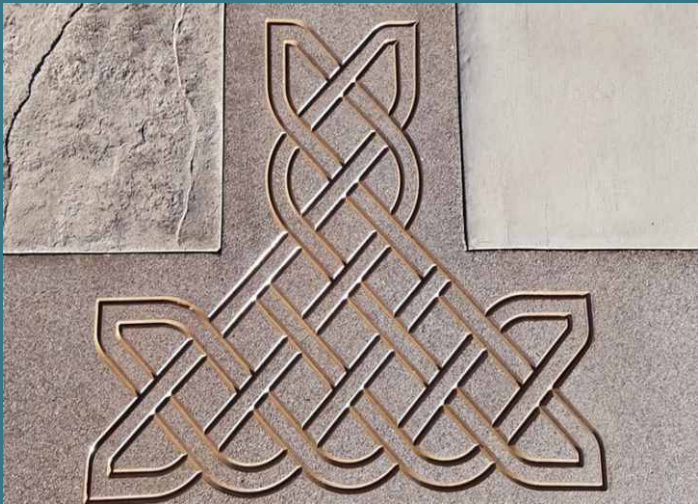
*Stamped Concrete Flooring*



## UNIQUE CONCEPT IN CONCRETE DECORATIVE FLOORING

*Hicrete Designer Stencil Are Reusable Urethane Stencils, The Latest Innovation For Decorative Concrete. The New Technology Allows Alternate Ways To Create Shape And Form In Concrete Surfaces, Leaving Behind Crisp Clean Designs. Compass Roses, Medallions, Intricate Borders, Corner And Center Designs. Design Options Available Are : Celtic Knot, Trinity, Lotus & Compass Medallions.*







**Stamped  
Concrete  
Flooring**

**Spray  
Textured  
Flooring**

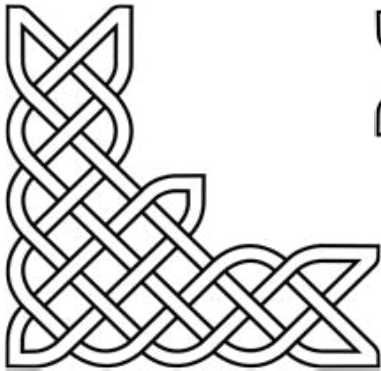




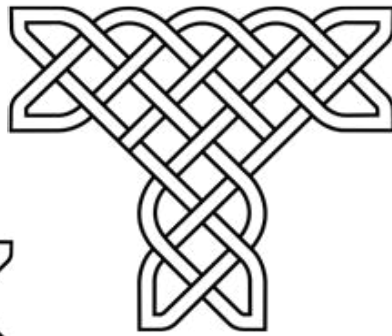
## Stencilled Exposed Aggregate Concrete Flooring



## Celtic Knot



Corner Piece,  
CD-2002 12"x36"x36"



T-piece,  
CD-2003  
12"x36"x36"



Center Piece,  
CD-2004 12"x48"x48"

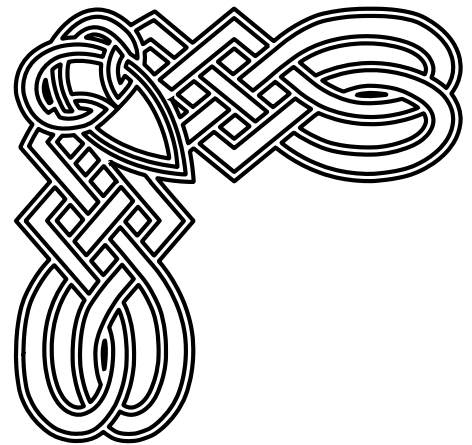
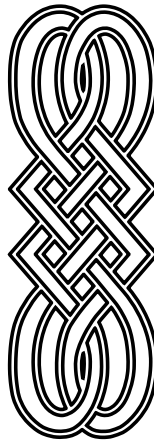
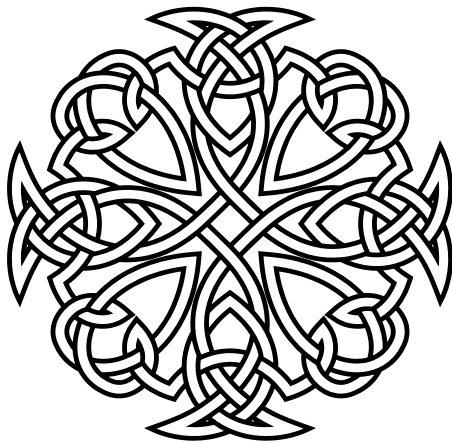


Linier Border,  
CD-2001 12"x36"

## Basic Set, 21 Stencils, CD-2000S

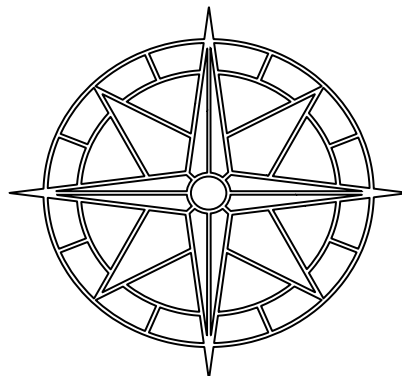
(12x Linier Border + 4x Corner Pieces + 4 T-pieces + 1 Center Piece)

## Trinity



Trinity Center, CD-3003, 48"x48"  
Trinity Linier Border, CD-3001, 36"x12"  
Trinity Corner, CD-2002, 30"x30"  
Basic Set (16x Linier Border + 4x Corner  
Pieces + 1 Center Piece)

## Compass Rose Narrow



CD-1001  
48"x48",36"X36",24"X24"



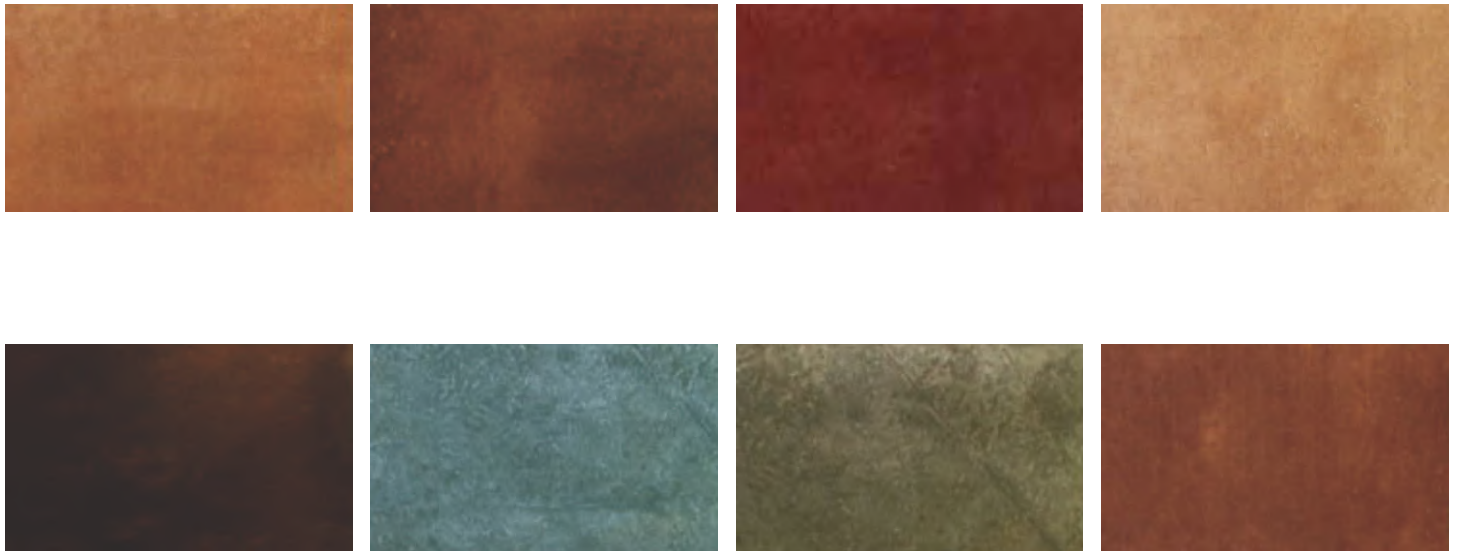
Innovative & Decorative Concrete Technology

**Innovative Products..**

**For Innovative Industry...**

**HICRETE STAIN COLOUR CHART**

**ACID STAIN-COLOUR CHART**



**ENVIRO STAIN - COLOUR CHART**





## -: Our Valuable Clients :-



NMMC



Relcon Infraprojects Ltd.



**WESTIN**  
HOTELS & RESORTS®



**TOSHIBA**  
Leading Innovation >>>



  
DR. REDDY'S



LARSEN & TOUBRO



PERSISTENT



**BHARAT FORGE**



TM  
**Hi-Crete**  
**Systems**

---

*Innovative & Decorative Concrete Technology*

[www.hicretesystems.com](http://www.hicretesystems.com)  
[www.hitechflooringindia.com](http://www.hitechflooringindia.com)



Email : [hicretesystems@gmail.com](mailto:hicretesystems@gmail.com)

**Hicrete Decorative Systems Pvt. Ltd**  
**Aseem Bunglow, Plot No 36,**  
**Sant Eknathnagar Part II,**  
**Bibwewadi, Pune-411037**  
**020-41259091**  
**+91 9822555870 / +91 9028850789**

The photos depicted in this brochure are shown for guideline purposes only, and are not intended to represent the entirety of techniques or methods used by authorized applicators. The colors shown are approximate. When applied to a surface, the color may be altered depending on the surface conditions, application methods, finishing techniques and other environmental factors beyond the control of Hicrete Decorative Systems. A test application is always recommended. The color representations depicted in this brochure may vary from actual surface colors due to limitations in electronic and printed reproduction technologies.

**CIN No : U242740PN2013PTC147014**